



More Than Just A Current Profiler

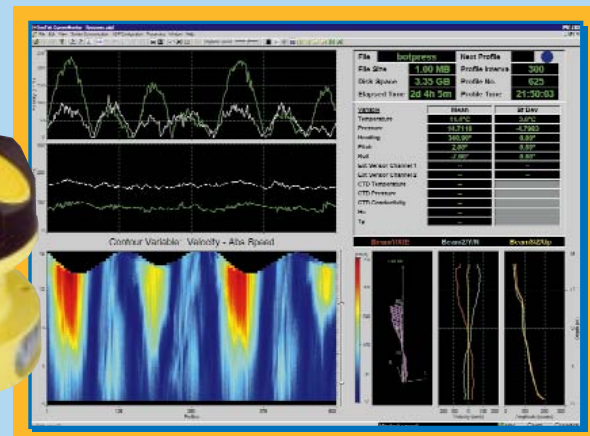
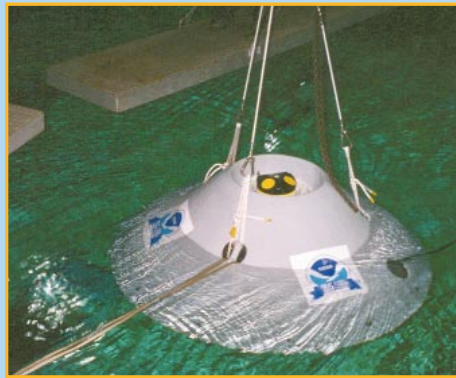
SonTek

ADP™ Acoustic Doppler Profiler

With hundreds of satisfied users around the world, the ADP is proven, capable and versatile. Whether your application is hydrology, oceanography or harbor monitoring, there is an ADP configuration to suit your needs.

OPTIONS AND FEATURES

- Bottom tracking and GPS input for moving boat applications
- Windows 95/98/NT software for real-time and post-processing
- Side-looking configurations for horizontal profiling
- Water level and wave spectra
- Optional external sensors including CT and turbidity

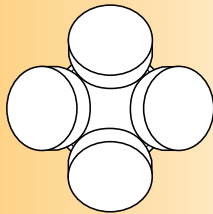
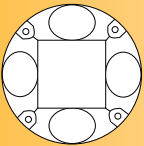
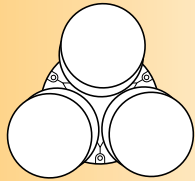
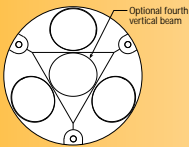
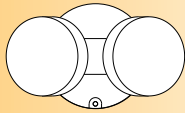
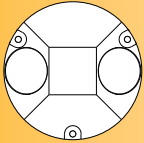


PERFORMANCE SPECIFICATIONS

SonTek

ADP™ Acoustic Doppler Profiler

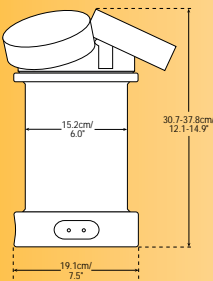
Transducer Configurations



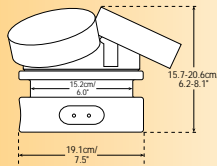
1000 kHz and Higher

500 kHz and Lower

Housing Configurations



Standard



Low-Profile

*Actual dimensions are dependent upon system frequency and transducer configuration.



The World Leader for Water Velocity Measurement

S
O
N
T
E
K
A
D
P
S
P
E
C
I
F
I
C
A
T
I
O
N
S

Available Frequencies and Ranges

Frequency (kHz)	3000	1500	1000	500	250
Maximum Profiling Range (m)	3-6	15-25	25-35	70-120	160-220

Velocity Data

- Range: ± 10 m/s
- Resolution: 0.1 cm/s
- Accuracy: $\pm 1\%$ of measured velocity, ± 0.5 cm/s
- Up to 100 range cells

Standard features

- Robust, digital signal processing
- 8 bit A/D conversion
- Three-beam transducer for 3D current measurement
- Transducer shading for minimal sidelobes
- Oversize piezoelectric ceramic for narrow beams
- Recessed wet-mateable connector
- Temperature sensor

Hardware options

- Two-beam side-looking configuration for horizontal profiling
- Four-beam Janus configuration
- Four beam configuration with one beam oriented vertically
- Low-profile housing (DSP electronics located in a separate splash-proof box)
- Full ocean depth rating
- Internal recorder (20, 40, 85, 170 or 340 MB)
- Internal compass/two axis tilt sensor
- External battery case
- Self-contained configuration with batteries and electronics in a single housing
- Strain gage pressure sensor (0.1% accurate)
- Internal RPT pressure sensor (0.01% accurate)

Performance options

- Bottom tracking/DGPS interface for use from a moving boat
- SonWave wave spectrum package
- Pulse-coherent mode for high resolution profiling (contact SonTek for details)

Windows 95/98/NT Software options

- RiverSurveyor package for real-time river discharge measurements from moving boats
- CurrentSurveyor for velocity profiling from a moving vessel
- CurrentMonitor for fixed installations
- ViewADP for post-processing

External sensor options

- SeaBird MicroCat CT
- D&A OBS turbidity
- Paroscientific quartz pressure sensor
- Other sensor interfaces are available, please contact SonTek

Power Consumption (Typical Continuous Operation)

- 12-24 VDC
- 2.0-2.5 W Operating mode
- Less than 1 mW Sleeping mode
- Total battery capacity (3 packs at 5° C): Alkaline 1800 Wh

Compass/Tilt Sensor

- Resolution: Heading, Pitch, Roll 0.1°
- Accuracy: Heading $\pm 2^\circ$
- Accuracy: Pitch, Roll $\pm 1^\circ$

SonTek's customer support is unsurpassed in the industry. Our experienced and professional staff is ready to assist you with the use and application of the ADP.

CORPORATE HEADQUARTERS

9940 Summers Ridge Road

San Diego, CA 92121

Tel: (858) 546-8327

Fax: (858) 546-8150

e-mail: sales@sontek.com

website: www.sontek.com

MADE IN U.S.A.

© 2000 SonTek.
SonTek & ADP are registered trademarks of SonTek, Inc., San Diego, CA, USA.
Specifications subject to change without notice.

ADP v.4 • 6/08